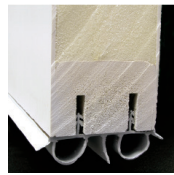
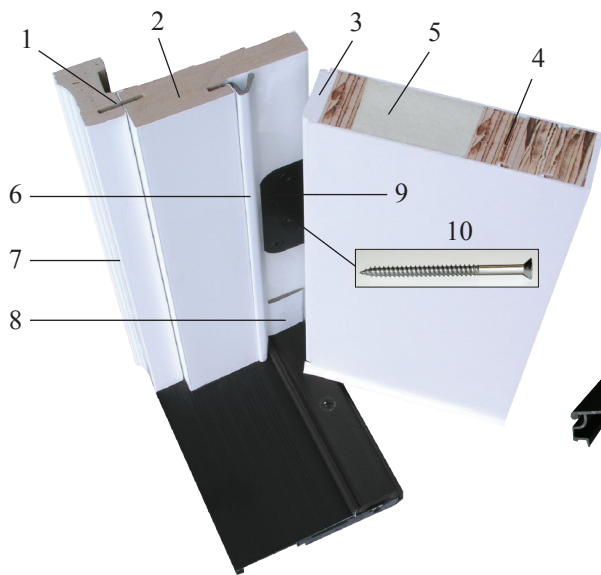
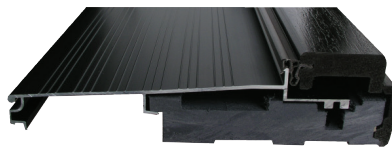


The Codel Way

Inswing Adjustable Sill

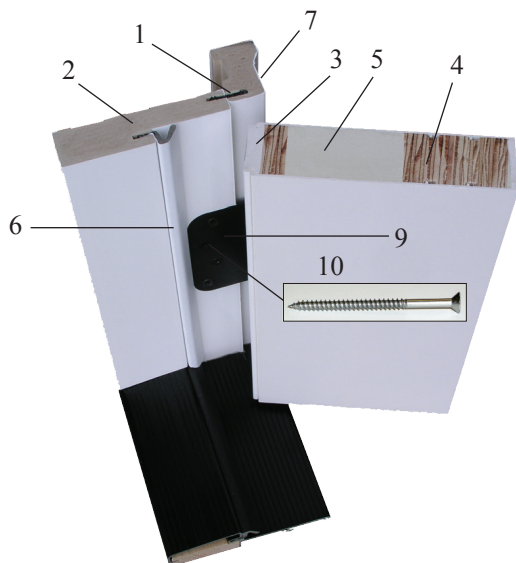


Drive-In Bulb Sweep



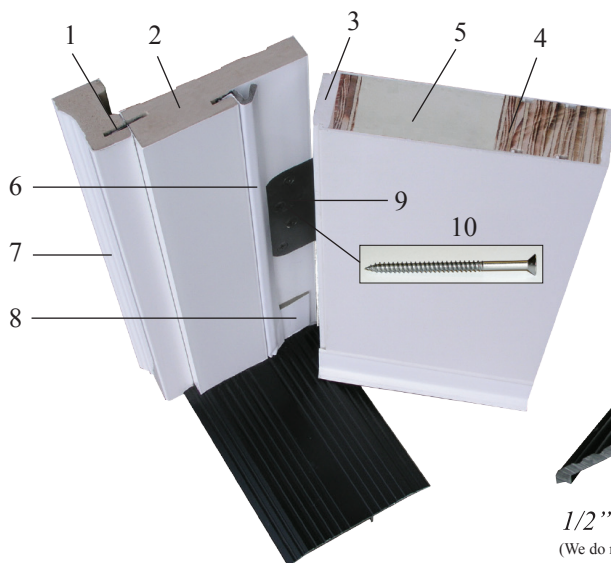
High-Dam Adjustable Sill with composite base.

Outswing Bumper Sill

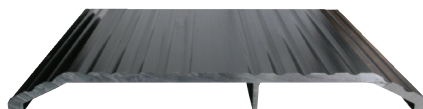


Outswing Bumper Sill

Inswing Low-Profile Sill



U-Shaped Adjustable Vinyl Cap Sweep



1/2" Rise Low Profile ADA Threshold
(We do not recommend this sill for extreme weather conditions.)

1. "Seams-Rite" - Spline attaching brickmould with NO nails.
(Available on WeatherGuard Only)
2. WeatherGuard Jamb - Unique poly-fiber door frame system that will not absorb or wick moisture and will not warp, splinter or rot.
(Optional)
3. PVC Edge - To protect against water.
4. 3-1/4" LVL Stile - Continuous 3-1/4" lock rail extending the full length of the LOCK SIDE, keeping the door from bowing.
5. R15.49 Panel Core - High density poly-urethane core provides an energy efficient door free of CFCs.
6. Q-Lon Weatherstripping - Compression weatherstrip.
7. WeatherGuard Brickmould - All composite brickmould.
(Optional)
8. Corner Seal - Extra protection against air & water infiltration.
9. 4" Hinge - steel based hinge available in a variety of colors to compliment any decor.
(Codel recommends non-ferrous hinges on all outswing doors.)
10. 2-3/4" Installation Screw - Secures the jamb into the wall stud. (Provided)

CODEL
DOORS