

High Performance Commercial Grade Ball Bearing Hinges **Standard** on Codel Fiberglass Doors

Strength and Durability:

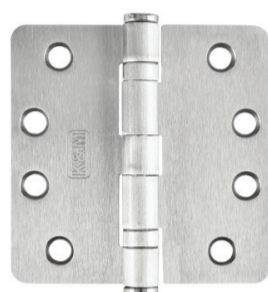
Heavy-duty commercial strength hinge, that is much thicker than the standard residential hinge found on most residential fiberglass doors in the industry. This stronger hinge keeps your door true and fit in the opening, and reduces the risk of sagging.

Smooth Operation:

Our heavy-duty hinges come standard with ball bearings, giving your entry door ease of opening and years of quiet operation.

Appearance and Security:

With a thickness of 3.3mm, and 1/4 radius, these hinges are not only aesthetically pleasing, but are more secure than the traditional residential hinge.



US15 Satin Nickel
(Non-Ferrous or *Self-Closing Options Also Available)



US26 Bright Chrome
(*Self-Closing Option Also Available)



US26D Brushed Chrome
(*Self-Closing Option Also Available)



US3 Brass
(Non-Ferrous or *Self-Closing Options Also Available)



US1D Black
(Non-Ferrous or *Self-Closing Options Also Available)



US10B Bronze
(Non-Ferrous or *Self-Closing Options Also Available)



US5 Antique Brass
(Self-Closing Option Available as Special Order.)



US32D Stainless Steel
(Non-Ferrous)

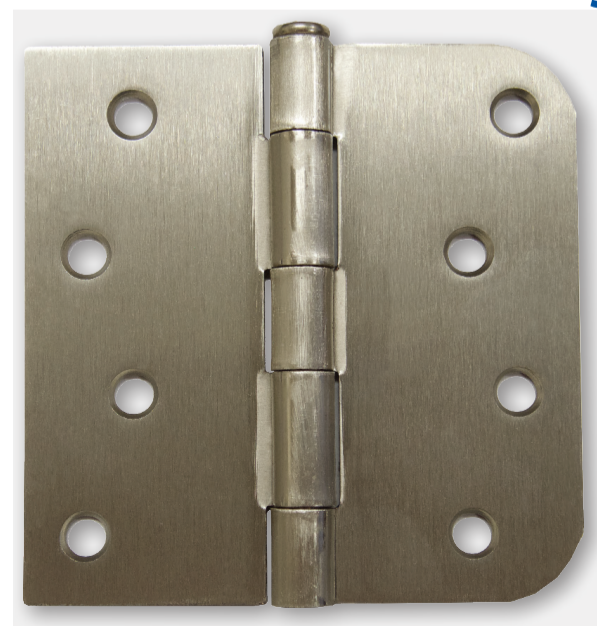
*Self-Closing Hinges **ARE NOT** Ball Bearing.

■ Extended Leadtime Required.



Codel recommends non-ferrous hinges on all outswing doors as steel based hinges may develop rust if they are exposed to moisture.

Steel Door Standard Hinge



Our steel doors come with a standard weight hinge, available in the same color choice options noted above.